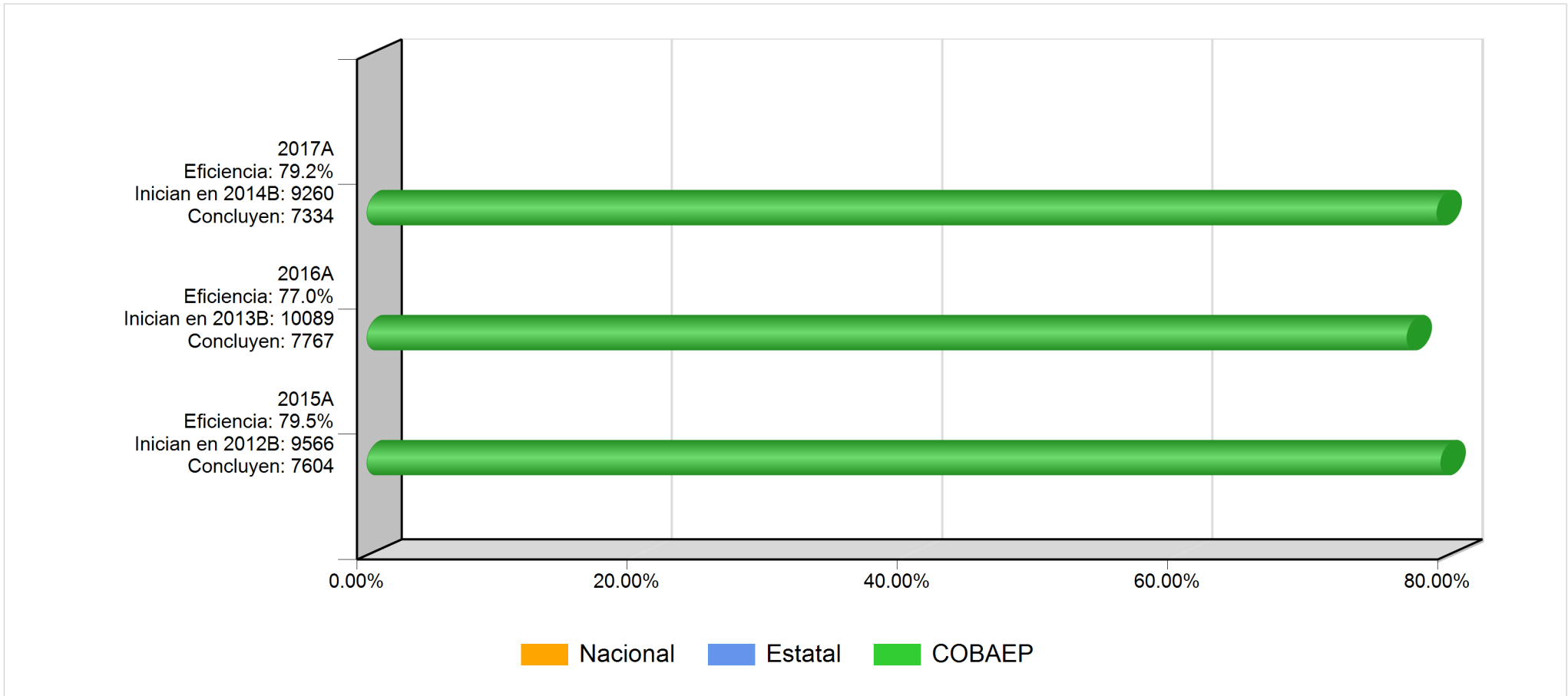
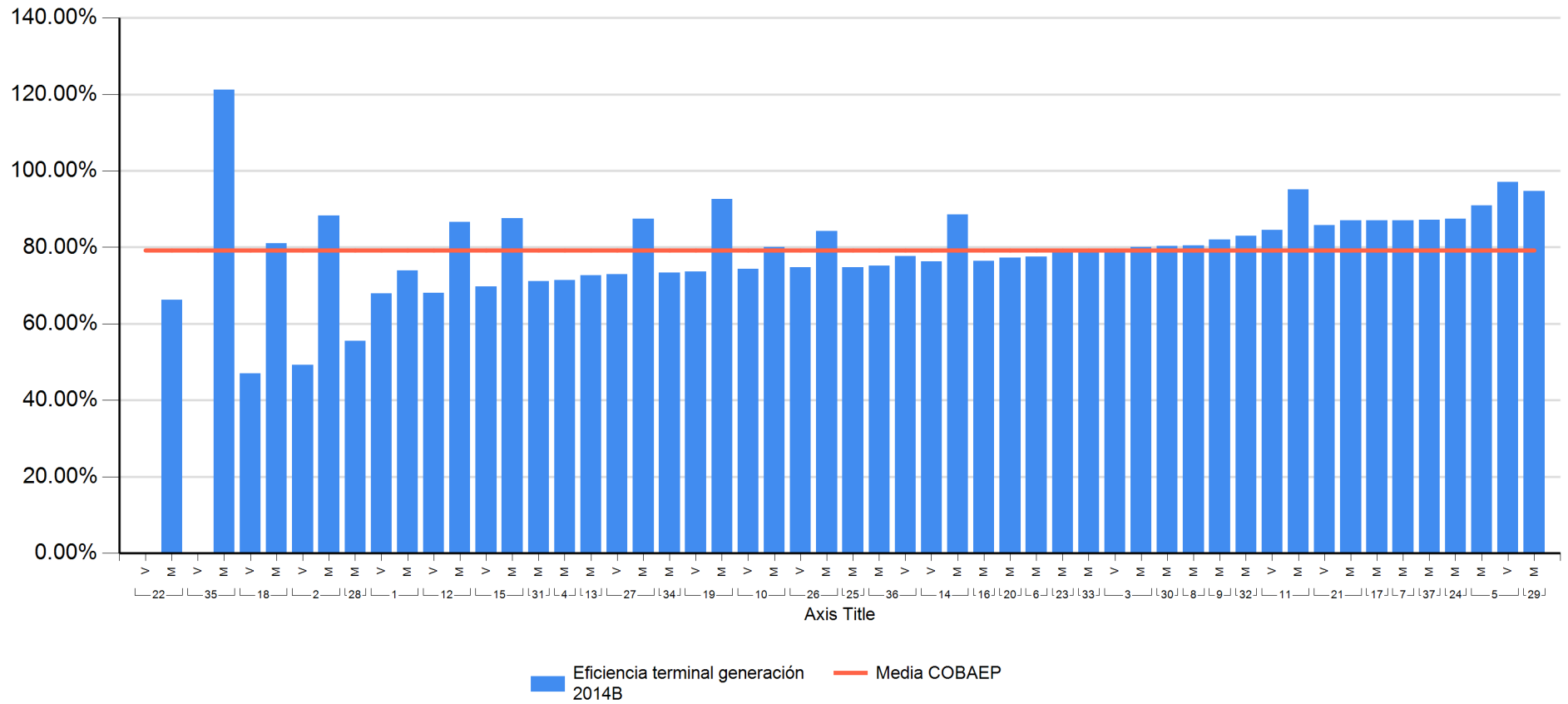


13. EFICIENCIA TERMINAL 2017A



13. EFICIENCIA TERMINAL 2017A



13. EFICIENCIA TERMINAL 2017A

Plantel	Nombre Corto	Turno	Matrícula Inicial 2014B	Existencia 2017A	Indicador
22	Cd. Serdán	V	45	0	0.0%
35	Chilchotla	V	16	0	0.0%
18	Xalmimilulco	V	49	23	46.9%
2	Angelópolis	V	207	102	49.3%
28	Atlixco	M	137	76	55.5%
22	Cd. Serdán	M	181	120	66.3%
1	Totimehuacan	V	249	169	67.9%
12	I. Matamoros	V	138	94	68.1%
15	Rivera Anaya	V	241	168	69.7%
31	Zacaola	M	83	59	71.1%
4	Tecali	M	168	120	71.4%
13	Xoxtla	M	194	141	72.7%
27	Zaragoza	V	37	27	73.0%
34	Acateno	M	45	33	73.3%
19	Acatzingo	V	178	131	73.6%
1	Totimehuacan	M	307	227	73.9%
10	Huachinango	V	39	29	74.4%
26	Chachapa	V	222	166	74.8%
25	Libres	M	250	187	74.8%
36	Villa Frontera	M	145	109	75.2%
14	La Margarita	V	173	132	76.3%
16	Tlachichuca	M	195	149	76.4%
20	Romero Vargas	M	251	194	77.3%
6	Ixcaquixtla	M	218	169	77.5%

13. EFICIENCIA TERMINAL 2017A

36	Villa Frontera	V	94	73	77.7%
23	Zacatlán	M	279	221	79.2%
33	Pahuatlán	M	39	31	79.5%
3	San Jerónimo C.	V	235	187	79.6%
3	San Jerónimo C.	M	235	188	80.0%
10	Huachinango	M	271	217	80.1%
30	Tlacotepec	M	137	110	80.3%
8	Tehuacán	M	282	227	80.5%
18	Xalmimilulco	M	221	179	81.0%
9	Teziutlán	M	167	137	82.0%
32	Coltzingo	M	100	83	83.0%
26	Chachapa	M	228	192	84.2%
11	Xicotepec	V	200	169	84.5%
21	Loma Bella	V	275	236	85.8%
12	I. Matamoros	M	165	143	86.7%
17	Tlatlauquitepec	M	231	201	87.0%
7	Chiautla	M	108	94	87.0%
21	Loma Bella	M	271	236	87.1%
37	Atempan	M	47	41	87.2%
27	Zaragoza	M	192	168	87.5%
24	Zapotitlán	M	56	49	87.5%
15	Rivera Anaya	M	249	218	87.6%
2	Angelópolis	M	273	241	88.3%
14	La Margarita	M	175	155	88.6%
5	Sn. Martín Tex.	M	220	200	90.9%
19	Acatzingo	M	203	188	92.6%



13. EFICIENCIA TERMINAL 2017A

29	Tetela	M	95	90	94.7%
11	Xicotepec	M	202	192	95.0%
5	Sn. Martín Tex.	V	209	203	97.1%
35	Chilchotla	M	33	40	121.2%
TOTAL			9260	7334	79.2%